



***Facility Planning Team Report
to the Congregation
26 September 2010***

Facility Planning Team

- Alta Macfie
- Dale Tuck
- Holly MacDonald
- Jean-Pierre Bernard
- Phillip Campbell
- Rev. James Hurd
- Shayla Fraser
- Terry McBurney

***Motion Approved at the Congregational
AGM- 20 February, 2010***

That the Congregation authorize the BPT to proceed with planning to prepare for the construction of an addition to Parkwood Church which would replace the current Mulvagh Wing. The project would also include consideration of the renovation of the current Fellowship Hall/Kitchen/Meeting Room to provide appropriate facilities for the Christian Education Program, within the budget approved by the Session/Congregation.

Planning Process

- Site visits and definition of functional requirements
- Design Competition
 - 3 firms invited to participate
 - Designs submitted by:
 - Temprano and Young Architects Inc.
 - Susan Smith Architects
 - Preferred design and Architect selected
- Work with selected architect to develop conceptual design

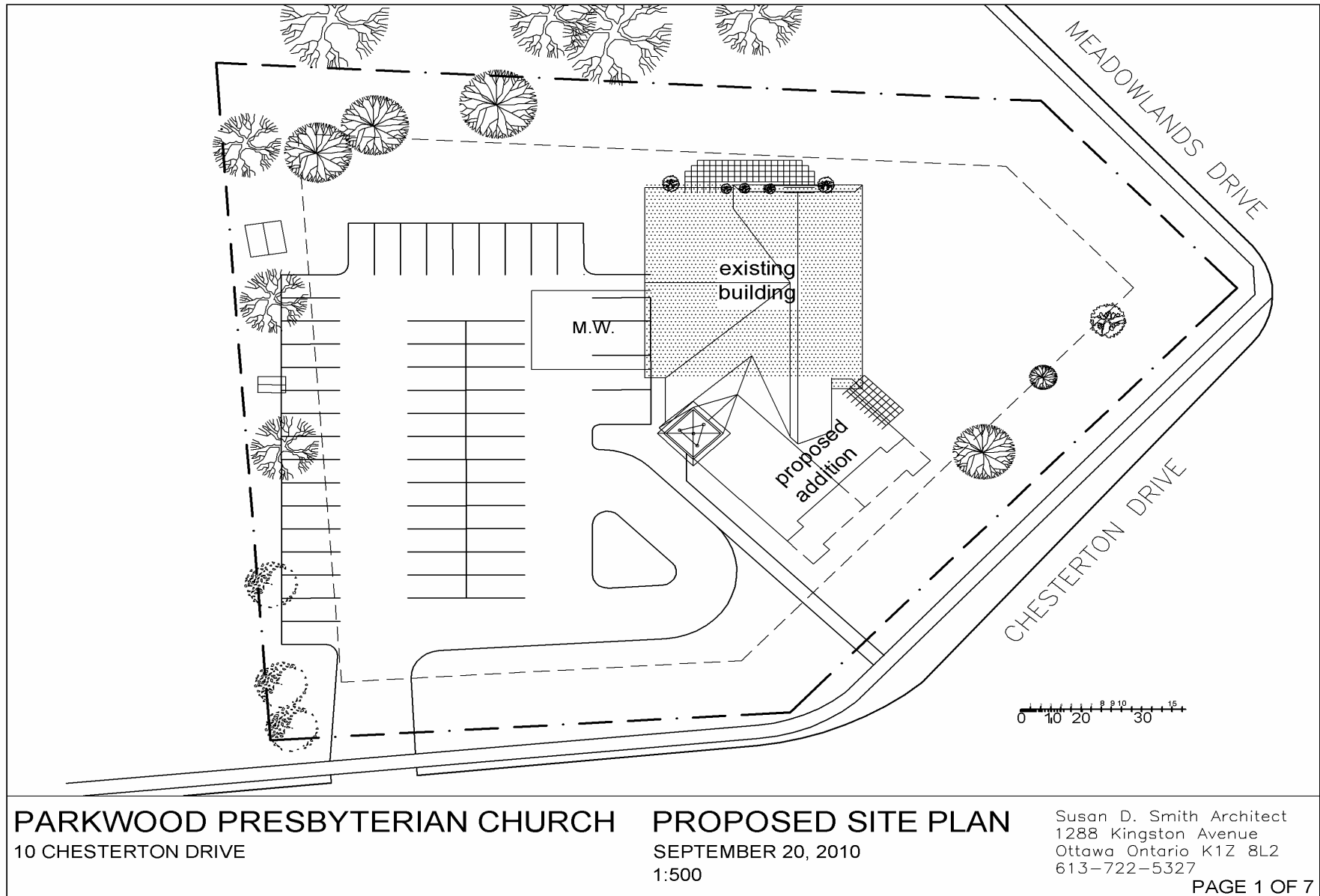
Planning Priorities

- The development of a fellowship area on the Main level;
- Christian education classrooms, nursery and pre-school area;
- Improved accessibility for people with limited mobility; and
- Improved storage.

Planning Priorities- Cont'd.

- Provide an expanded and improved Narthex that is a welcoming entrance to the Church;
- Provide drive up access to the Main Entrance;
and
- Increase the Church's visibility from both Meadowlands Drive and Chesterton.

Proposed Design- Site Plan



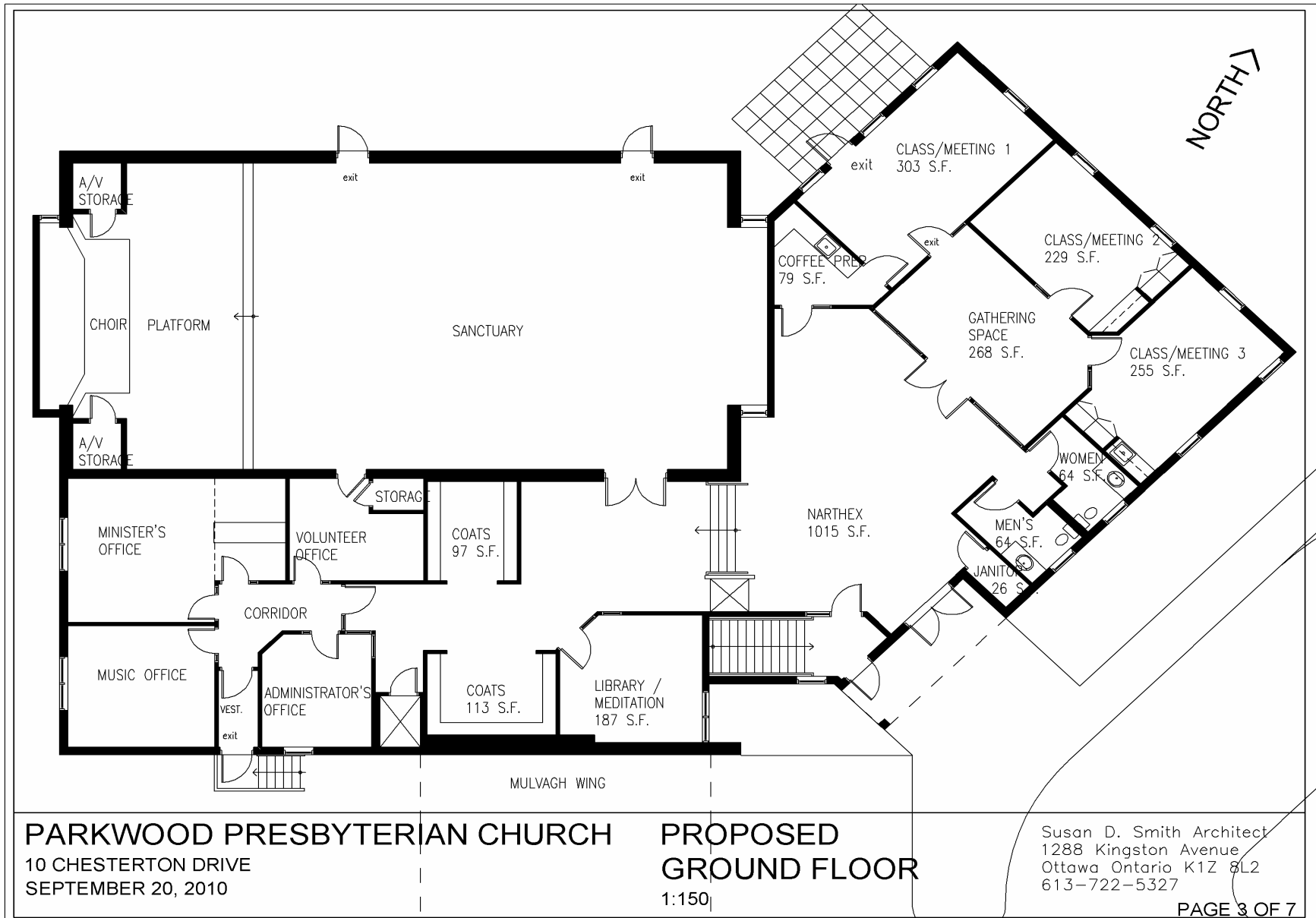
Option 1

- Believed to be within the budget established (\$550,000)
- Some limitations because of budget
 - Smaller fellowship area
 - Fewer classrooms
- Amount of renovation on Lower Level is less than option 2.

Option 1- Main Level

- A new front entrance with drive up access.
- Fellowship gathering area in narthex
- Christian Education- three classrooms and a “Gathering Area” that the Team believes can be used for Sunday Morning coffee fellowship and other similar activities.
- A kitchenette to serve the gathering area.
- Washrooms.
- Meditation room/Library.

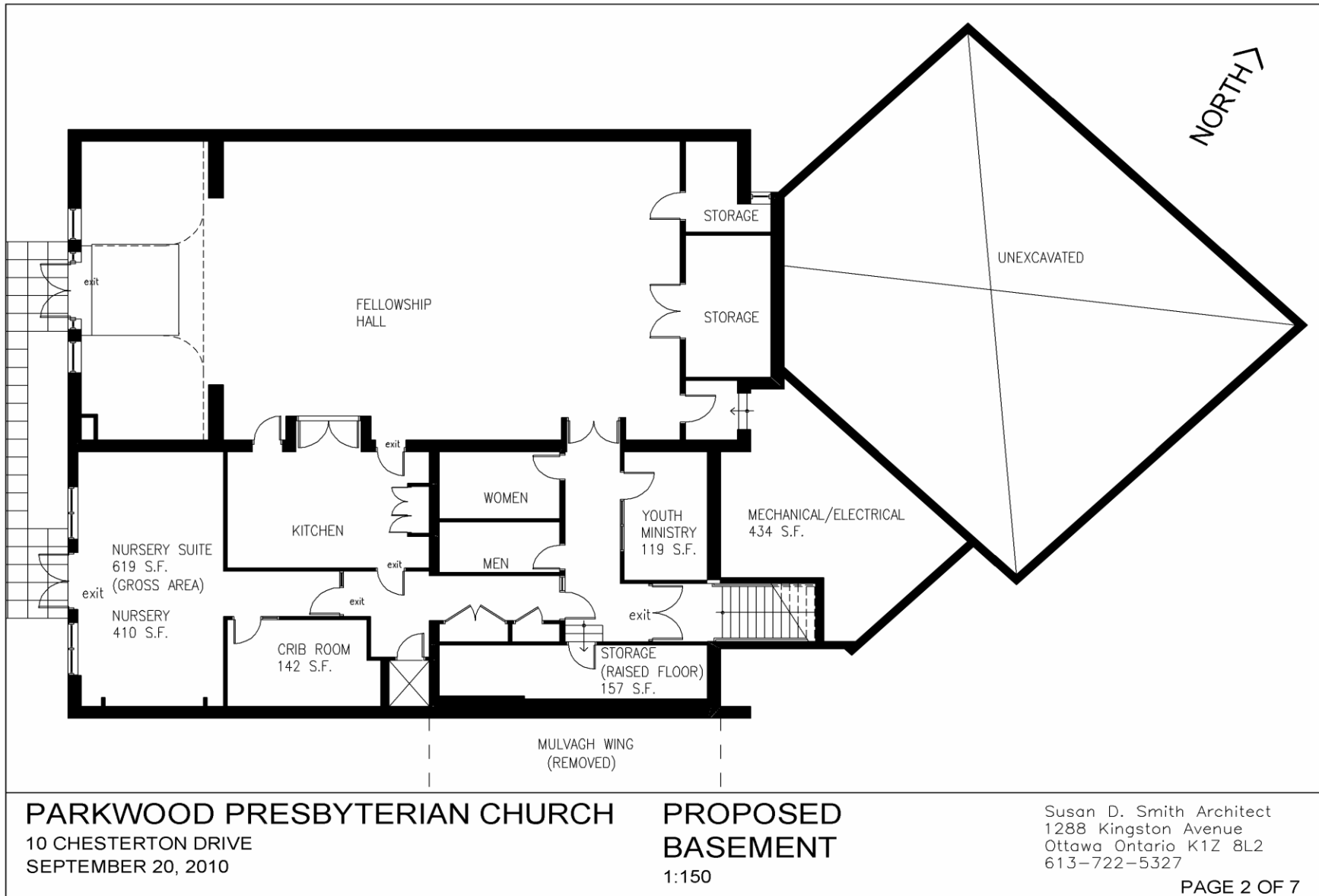
Option 1 Floor Plan- Main Level



Option 1- Lower Level

- Nursery/Pre-school area
- Youth Program Director office
- Fellowship Hall unchanged
- New stairway and storage area

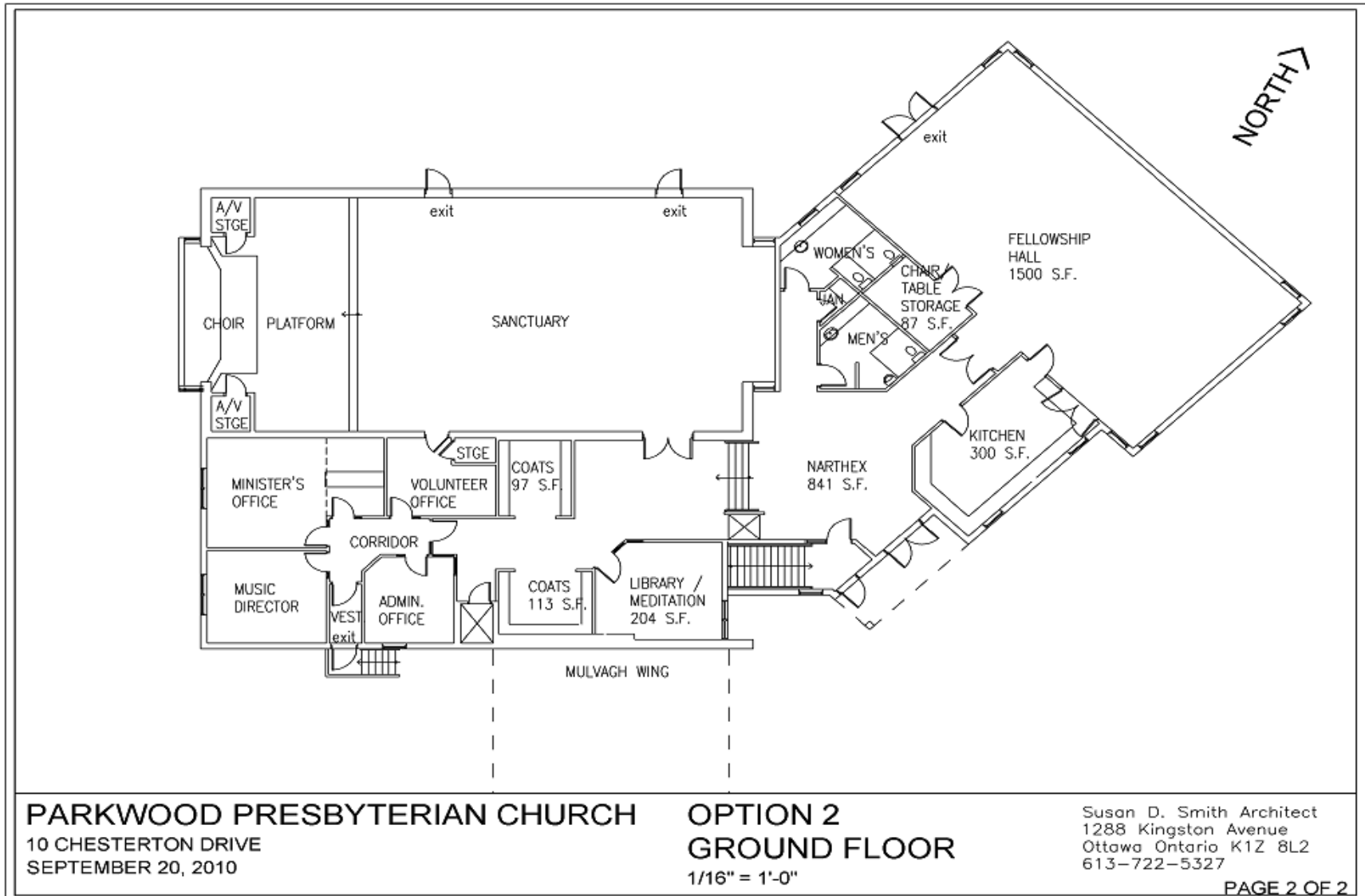
Option 1 Floor Plan – Lower Level



Option 2- Main Level

- A new front entrance with drive up access;
- A Fellowship Hall of the same size as the current Fellowship Hall, and appropriate storage space;
- A new kitchen and washrooms; and
- A Meditation Room/Library.

Option 2 Floor Plan- Main Level

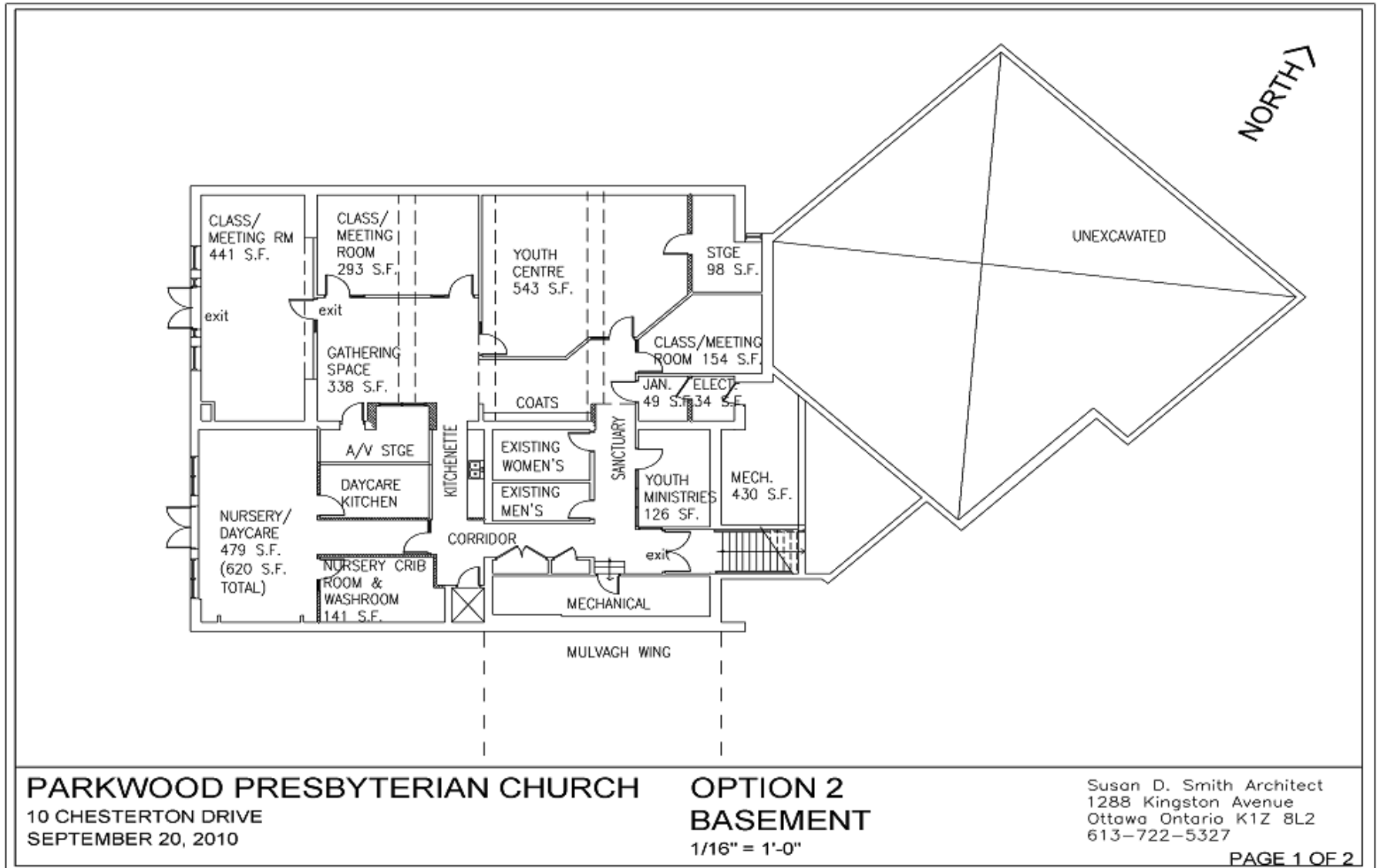


Option 2- Lower Level

The current Lower Level would undergo extensive renovation to include:

- Nursery- in the space currently occupied by the Meeting Room, Music office and Kitchen;
- Christian Education space – 4 classrooms and Youth Program space; and
- Youth Program Director's office- in the current Library Space.

Level Option 2- Lower Level



Option 3

- Same plan as Option 1 but additional 500 square feet is added to main Level to expand Fellowship Space.
- Estimated additional cost- \$110,000

Next Steps

- Approval by Congregation
- Establish contract with Architect
- Proceed with detailed planning
 - Consultation with church teams to refine design
- Present plans to Presbytery for approval
- Begin discussions with the Planning Department, City of Ottawa, to obtain site approval.

Recommendations

The following recommendations were unanimously accepted by the Session at a meeting on Monday, 30 August, 2010 and are presented to the Congregation for discussion and decision:

- That the Session and Congregation accept Option 1 as presented by Susan Smith Architects and authorize the Facility Planning Team to continue to work with Susan Smith Architects to refine this design to a level to be submitted to tender and approval by Municipal Authorities and lending agencies. The cost of this design work would be charged against the building project.
- That Session and Congregation agree to consider Options 2 or 3 - the expansion of the Fellowship space on the main level if fund-raising generates sufficient funds.